



Contents lists available at ScienceDirect

Biochemical and Biophysical Research Communications

journal homepage: www.elsevier.com/locate/ybbrc



Masking autoprocessing of *Clostridium difficile* toxin A by the C-terminus combined repetitive oligo peptides

Yongrong Zhang, Therwa Hamza, Si Gao, Hanping Feng*

Department of Microbial Pathogenesis, University of Maryland Dental School, Baltimore, MD 21201, USA



ARTICLE INFO

Article history:

Received 6 February 2015

Available online 26 February 2015

Keywords:

Clostridium difficile

Toxin A

Autoprocessing

C-terminus combined repetitive oligo peptides (CROPs)

Cysteine protease domain (CPD)

ABSTRACT

Clostridium difficile toxin A and B (TcdA and TcdB) are the major virulence factors of the bacterium, both of which consist of two enzymatic domains: an effector glucosyltransferase domain (GTD) and a cysteine protease domain (CPD) responsible for autocleavage and release of GTD. Although the CPDs from both toxins share a similar structure and mechanism of hexakisphosphate (InsP₆)-induced activation, TcdA is substantially less sensitive to the autocleavage as compared with TcdB. In this study, we provided evidence of inter-domain regulation of CPD activity of TcdA and its autoprocessing. The C-terminus combined repetitive oligo peptides (CROPs) of TcdA reduced the accessibility of TcdB CPD to its substrate in a chimeric toxin TxB-Ar, consequently blocking autoprocessing. Moreover, interference of antibodies with the CROPs of full-length TcdA efficiently enhanced its GTD release. In conclusion, by utilizing chimeric toxins and specific antibodies, we identified that the CROPs of TcdA plays a crucial role in controlling the InsP₆-mediated activation of CPD and autocleavage of GTD. Our data provides insights on the molecular mode of action of the *C. difficile* toxins.

© 2015 Elsevier Inc. All rights reserved.

1. Introduction

Clostridium difficile infection is the leading cause of antibiotic associated diarrhea for the past decade in North America and Europe. Two large exotoxins, TcdA (308 kDa) and TcdB (269 kDa) are the primary virulence factors of the disease. The two proteins are homologous to each other and have a similar domain structure containing at least four functional domains [1–3]: an N-terminus glucosyltransferase domain (GTD), a cysteine protease domain (CPD), a putative translocation domain, and a C-terminus receptor binding domain (RBD, also known as combined repetitive oligo peptides or CROPs). The CPDs of TcdA and TcdB autocleave and release their GTDs upon binding of allosteric cofactors inositol hexakis and heptakisphosphate (InsP₆ and InsP₇) [4–6], a process that is important but not required for the cytotoxicity of the toxins [7,8].

Although TcdA and TcdB share a similar CPD structure and conserved InsP₆-induced activation mechanism [9], the two toxins differ significantly in efficiency to undergo autoprocessing. InsP₆-induced autoprocessing of TcdB holotoxin has been fully demonstrated in several studies [5,6,10,11]. On the contrary, few reports

showed only autoprocessing of full-length of TcdA in the presence of both InsP₆ and DTT [8,12,13]. Since dithiothreitol (DTT) alone can trigger the autocleavage of TcdA [14], it is unknown whether TcdA holotoxin is sensitive to InsP₆-induced autoprocessing. On the other hand, a fully autoprocessing was reported in C-terminus-truncated TcdA [8] or CPD fragment of TcdA containing the cleavage site [15]. The molecular mechanism underlying the insensitive of TcdA to InsP₆-mediated autocleavage is unknown but a recent study indicates that CROPs may play some roles [12].

In this study, we found that a chimeric TcdB bearing the full-length of receptor binding domain (RBD) or CROPs from TcdA was no longer sensitive to InsP₆-induced autoprocessing. Monoclonal antibodies that specifically bind to CROPs of TcdA significantly enhanced the InsP₆-mediated autocleavage and the release of its GTD. Our study thus provided evidence that the C-terminus CROPs from TcdA affect the toxin's autoprocessing and understanding on inter-domain interaction that may affect the molecular mechanism of toxin action.

2. Materials and methods

2.1. *C. difficile* wild type toxins and chimera TxB-Ar

The generation and purification of recombinant wild type TcdA and TcdB were reported previously. The molecular cloning and

* Corresponding author. Fax: +1 410 706 6115.

E-mail address: h Feng@umaryland.edu (H. Feng).

purification of chimera TxB-Ar were as previously described [16]. The highly purified recombinant toxins that appeared as a single band on an SDS-PAGE gel were used in this study. Western blot was performed to detect various domains of toxins using mouse poly- and mono-clonal antibodies that were reported previously [17,18]. These antibodies are: α -TcdA and α -TcdB-I are antibodies respectively against C terminus of TcdA and TcdB (BioDesign Inc.); α -TcdB-II is alpaca serum raised in the lab which is against full length of TcdB; monoclonal mouse antibody A1E6 raised in the lab recognizes the whole C-terminus RBD of TcdA.

2.2. Cell lines and toxicity assay

The African green monkey kidney Vero cell line and mouse intestine carcinoma CT26 cell line were obtained from American Type Culture Collection (ATCC). Cells were maintained in Dulbecco's modified Eagle's medium containing 10% fetal bovine serum, 100 U/mL penicillin, 100 μ g/mL streptomycin, 2 mM L-glutamine, and 1 mM sodium pyruvate. The cytopathic/cytotoxic effects of toxins on cultured cells were assessed by cell rounding assays [16]. Vero or CT26 cells seeded in 96-well plates were treated with either wild type toxins or the chimera. Cell rounding was visualized by phase-contrast microscopy. Each toxin concentration was tested in triplicate for overall cell rounding, and the experiments were repeated three times. The glucosyltransferase activity was measured by detecting the glucosylation of Rac1 of Vero cells after toxin exposure as described previously [7,19]. Vero cells seeded in 24-well plates were incubated with various doses of toxins for 4 h. Then, cell pellets were collected and lysed by SDS-loading buffer and heating at 95 °C for 5 min. Non-glucosylated Rac1 was detected by immunoblot. β -actin was used as an equal loading control.

2.3. *InsP₆* induced autoprocessing

TcdB and TxB-Ar were diluted in 20 μ M Tris (pH 7.0) buffer to a concentration of 10 ng/ μ L in a final volume of 20 μ L. Autoprocessing was initiated by the addition of 25 μ M *InsP₆*. Following incubation at 37 °C for 1 h, the reactions were stopped by SDS sampling buffer and analyzed by Western blot using a V_HH antibody E3 against GTD of TcdB [18]. Autoprocessing of TcdA induced by 100 μ M *InsP₆* in 20 mM HEPES (pH 8.0) in the presence or absence of 20 ng/ μ L of individual anti-CROPs of TcdA monoclonal antibodies or their mixture (20 ng/ μ L each) at 37 °C for 1 h. These antibodies included mouse monoclonal antibody A1H3 and A1E6 [20], V_HH antibodies AB8, A11G, AE1, AC1 and A3H [18]. An anti-GTD of TcdA V_HH AH3 was used to detect the cleaved GTD fragment in a western blot [18]. All the antibodies used in this experiment were generated in this laboratory [18,20].

2.4. AWP19 labeling

For CPD-activity based-labeling, 0.1 μ g/ μ L of TcdB or TxB-Ar was incubated with different doses of AWP19 in 20 μ M pH 7.0 Tris buffer in the presence of 25 μ M *InsP₆* at 37 °C for 1 h. Carboxy-*t*-tetramethylrhodamine (TAMRA) labeled and non-fluorescent AWP19 [21] were gifts from Dr. Aimee Shen (University of Vermont). The reaction was terminated with heating at 95 °C for 5 min in SDS-loading buffer. Samples were separated by 4–20% SDS-PAGE. AWP19-TAMRA labeled bands were detected using a G-Box Chemi (Syngene) with Green LED lights (520–550 nm) and UV06 filter (572–625 nm band pass). Coomassie blue staining was used to visualize total amount of loaded proteins and cleaved fragment.

3. Results

3.1. Structure and activity of chimera TxB-Ar

The chimera TxB-Ar is TcdB with its intact CROPs replaced by that from TcdA (Fig. 1A) with a molecular weight of 300 kDa. TxB-Ar was recognized by antibodies against the CROPs of TcdA (α -TcdA and A1E6) but not antibody against the CROPs of TcdB (α -TcdB-I) (Fig. 1B). TxB-Ar was also recognized by the poly-serum against full-length TcdB (α -TcdB-II). TxB-Ar is less potent than TcdB in inducing cell rounding in either Vero (Fig. 1C) or CT26 cells (Fig. 1D), but comparable to TcdA. We further examined Rac1 glucosylation of Vero cells after exposure to the chimeric and wild type toxins. Consistent with the results of cytotoxicity assay, TcdA or TxB-Ar at 100 ng/mL was able to cause glucosylation of most Rac1 whereas TcdB at 1 ng/mL induced a similar amount of Rac1 glucosylation (Fig. 1E). Furthermore, TxB-Ar is proinflammatory and capable of inducing TNF- α production by DCs [16]. These data indicate that TxB-Ar is a fully functional toxin.

3.2. *InsP₆* induced autoprocessing of TxB-Ar is abolished

Since TxB-Ar is fully functional and has intact GTD and CPD as wild type TcdB, we expect that the chimera acts similarly as TcdB in response to *InsP₆* exposure. In the presence of *InsP₆*, TcdB efficiently released its GTD after 10 min of incubation (Fig. 2A). Surprisingly, the autoprocessing and releasing GTD from TxB-Ar were not detectable even after 60 min of *InsP₆* incubation (Fig. 2A). Furthermore, a fluorescent probe AWP19 that mimics the substrate and specifically binds to the enzymatic pocket of TcdB cysteine protease [10,21,22] failed to bind to TxB-Ar whereas a dose-dependent binding showed in wild type TcdB, suggesting CPD activity sites of TxB-Ar were not accessible to its substrate (Fig. 2B upper panel). As the result, the autocleavage and release of GTD from TcdB was inhibited by AWP19 in a dose-dependent manner whereas no autocleavage was seen in any conditions tested for TxB-Ar (Fig. 2B lower panel).

3.3. Antibody binding to the CROPs affects autoprocessing of TcdA

The results that chimera TxB-Ar did not undergo detectable autoprocessing in response to *InsP₆* exposure prompt us to investigate the potential interaction of the CROPs from TcdA with the CPD thus affect the autoprocessing of the toxin. To test this hypothesis, we utilized a panel of antibodies specifically recognizing CROPs from TcdA [18,20]. As shown in Fig. 3, wild type TcdA underwent autoprocessing in response to *InsP₆* treatment and the GTD fragment was clearly detected when the toxin was incubated with A1E6, AB8, or the antibody mixture containing all the tested antibodies. A1H3, A11G, and A3H antibodies seemed to have partial effects whereas antibodies AE1 and AC1 had no detectable effects on triggering the autoprocessing of TcdA holotoxin. These data demonstrated that antibodies specific to CROPs of TcdA rendered the toxin sensitive to *InsP₆*-induced autocleavage, suggesting that the CROPs domain at the C-terminus of TcdA affects the function of CPD by blocking *InsP₆*-mediated activation of the CPD and the subsequent autocleavage and release of N-terminal GTD fragment.

4. Discussions

The cysteine protease domains of TcdA and TcdB have been identified to mediate *InsP₆*-induced autocleavage and release of GTDs [6,8,14]. However, unlike TcdB, TcdA is highly resistant to *InsP₆*-mediated autoprocessing while the two toxins share

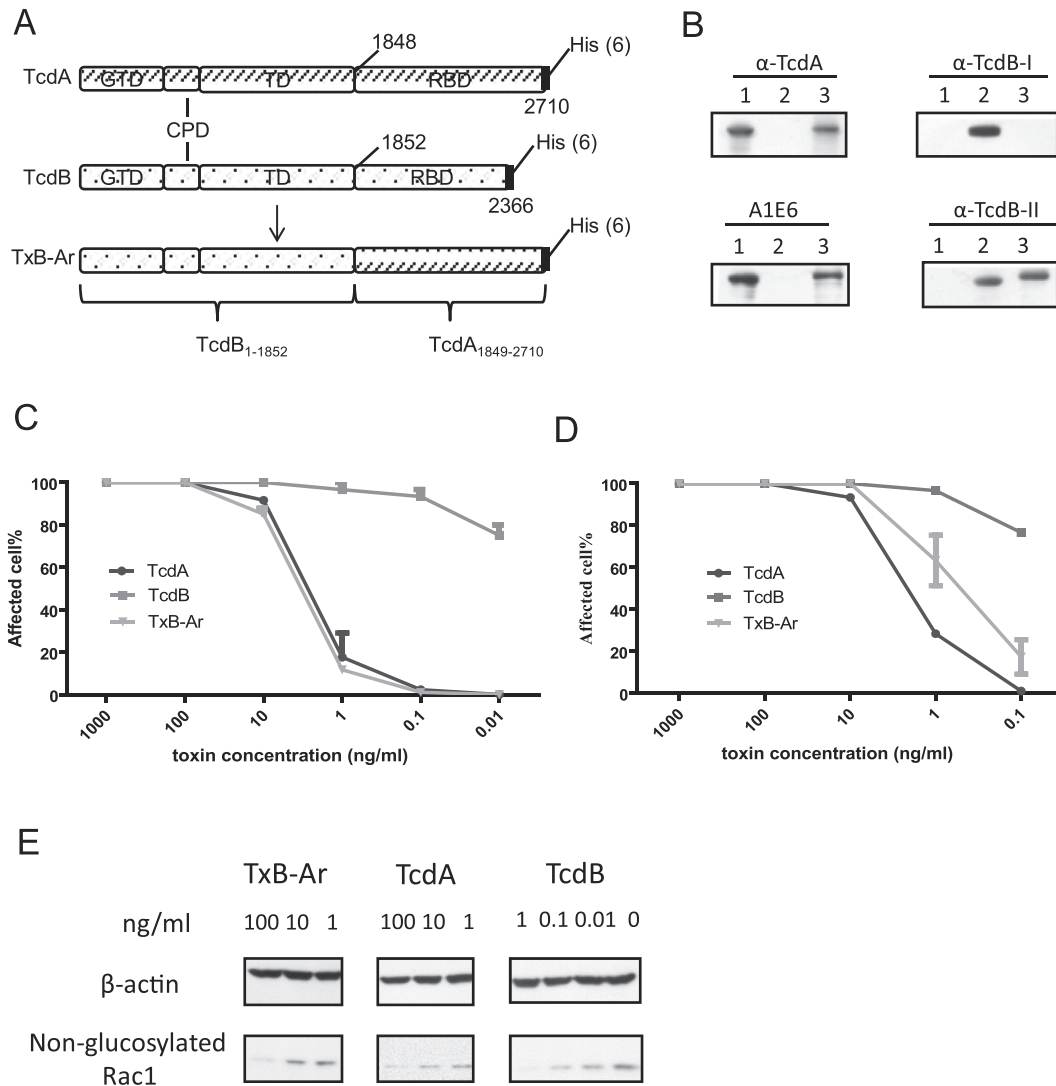


Fig. 1. Structure and activities of the chimera TxB-Ar. (A) Domain structure of TxB-Ar. TxB-Ar is TcdB with its C-terminus CROPs replaced by the full-length CROPs from TcdA. (B) Western blot analysis of TxB-Ar. Western blot was performed to detect the domains of TcdA, TcdB, and TxB-Ar with various antibodies. Lane 1: TcdA, Lane 2: TcdB, and Lane 3: TxB-Ar. (C, D): Cytopathic effects of the chimera TxB-Ar, TcdA, or TcdB to Vero cells (C) or CT26 cells (D). The serially diluted toxins were applied to the sub-confluent cells for 16 h. The percentage of rounding cells was examined under a phase contrast microscope. The experiments were performed three times and error bars indicate the standard error of mean (SEM). (E) Vero cells were incubated with the indicated doses of the toxins for 4 h. Cells were collected and lysed by SDS sampling buffer for western blot to detect Rac1 glucosylation.

structurally similar CPDs and the same mechanism of InsP_6 -induced activation [8,12,14]. In this study, we found that the full-length RBD containing CROPs of TcdA regulates the InsP_6 -mediated activation of CPD and autocleavage of its GTD. Our data provides insights on the molecular mode of action of *C. difficile* TcdA and TcdB.

To study whether other domains of the toxins affect InsP_6 -mediated autoprocessing, we compared the autocleavage and release of GTD from wild type TcdB and chimeric TcdB bearing the CROPs (TxB-Ar) from TcdA. We found that the chimera TxB-Ar was insensitive to InsP_6 exposure, suggesting that the CROPs from TcdA may affect the InsP_6 -mediated CPD activation. To confirm whether this can be a potential mechanism underlying the insensitivity of wild type TcdA to InsP_6 -mediated activation, we exposed TcdA with a panel of monoclonal antibodies that binds to the CROPs of the toxins while treating with InsP_6 . Our results showed that the binding of specific antibodies to the CROPs of TcdA allowed the InsP_6 -mediated activation of CPD and subsequently autoprocessing and release GTD of the toxin.

Crystal structure studies revealed that InsP_6 binding to both TcdA and TcdB could markedly shift the inactive CPD to an active and stable form exposing catalytic residues and intramolecular substrate docking [15,22]. Thus, InsP_6 treatment allows a fluorescent probe AWP19 mimicking CPD substrate to covalently modify the catalytic cysteine 698 residue of TcdB CPD [22]. The fact that TxB-Ar could not be labeled by AWP19 suggested that the protein was somehow folded to enclose the catalytic residues even in the presence of InsP_6 , indicating that the CROPs from TcdA might either affect InsP_6 binding or the access of AWP19 to the CPD of TcdB.

In this study, the chimeric toxin TxB-Ar failed to efficiently undergo autocleavage in the presence of InsP_6 , suggesting that CROPs from TcdA may affect CPD-mediated autoprocessing. Previously, Genisyuer et al. found a TcdB chimera with its C-terminus replaced by the receptor-binding domain of diphtheria toxin (DTRD) can efficiently undergo autoprocessing in the presence of InsP_6 [23], thus the suppression of the autoprocessing in TxB-Ar may be specific to the CROPs from TcdA. Most recently, Olling

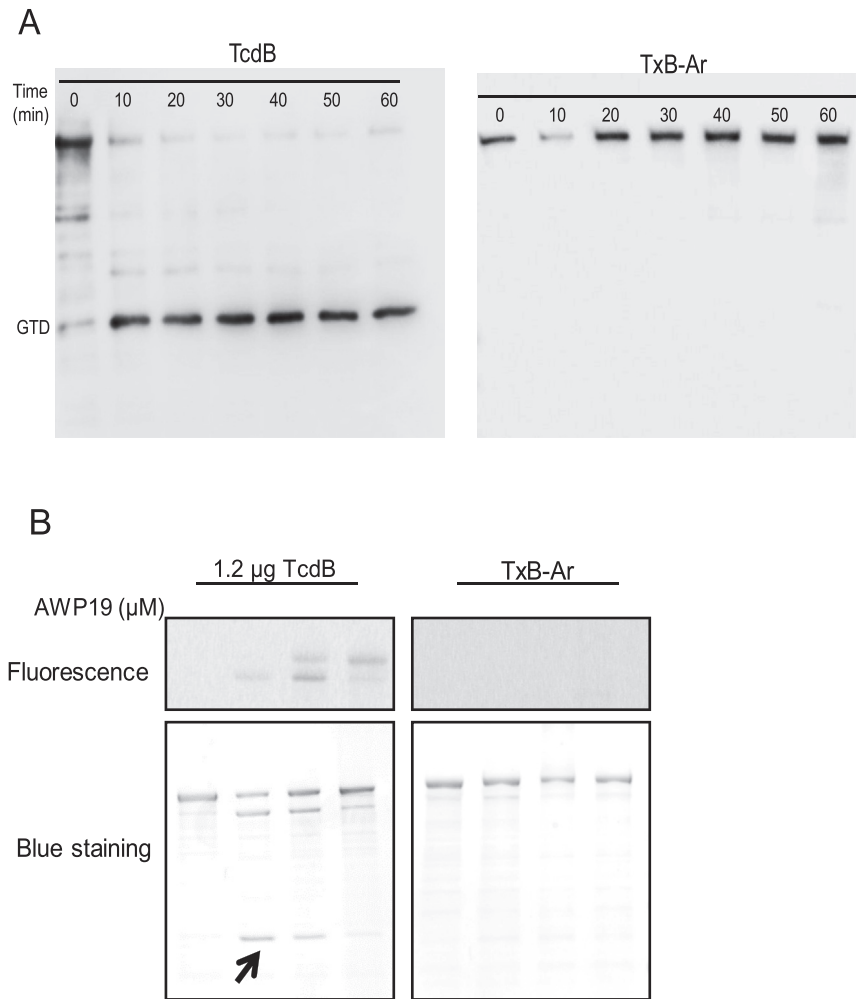


Fig. 2. Autoprocessing of chimera TxB-Ar. (A) InsP₆ induced autoprocessing of TcdB and TxB-Ar. 10 ng/μL of TcdB or TxB-Ar was incubated in the reaction buffer containing 25 μM InsP₆ at 37 °C for the indicated time. The reaction was terminated by SDS-sampling buffer and heating at 95 °C for 5 min. A V_HH antibody (E3) against the GTD of TcdB was used for western blot analysis. (B) CPD conformational change probed by fluorescent AWP19. TcdB (0.1 μg/μL) was incubated with the indicated doses of AWP19 in 20 μM pH8.0 Tris buffer containing 25 μM InsP₆ at 37 °C for 1 h. The reactions were stopped by SDS sampling buffer and the samples were loaded on a SDS-PAGE. Fluorescence was measured using G-Box Chemi system and the total proteins were visualized on the gel after coomassie blue staining. The arrow indicates the cleaved GTD fragment.

et al. [12] reported a similar chimeric toxin as TcdB¹⁻¹⁸⁵²-TcdA¹⁸⁷⁵⁻²⁷¹⁰ underwent autoprocessing induced by InsP₆ in the presence of DTT at a concentration alone can sufficiently induce autoprocessing of either TcdA or TcdB [14]. In addition, the CROPs from Olling et al. study is shorter than TxB-Ar (TcdA¹⁸⁴⁹⁻²⁷¹⁰) in our study which may also account for its inability to block autoprocessing of the chimeric toxin.

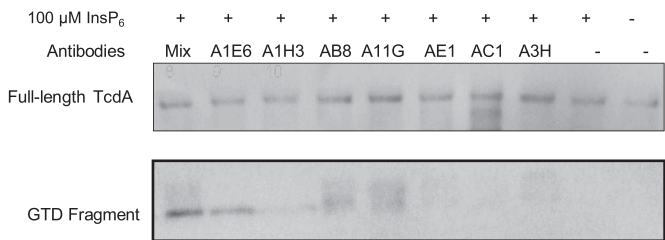


Fig. 3. Antibody interference with the autoprocessing of TcdA. TcdA was incubated with different antibodies and their mixture at 37 °C for 1 h in autoprocessing reaction buffer containing 25 μM InsP₆. The reaction was terminated by SDS-sampling buffer and heated at 95 °C for 5 min. Western blot was performed for detecting cleaved GTD fragment from TcdA using a GTD-specific V_HH antibody AH3.

To investigate whether the CROPs of TcdA indeed affect the holotoxin's autoprocessing, we utilized a panel of monoclonal antibodies that recognize the CROPs of TcdA. The binding of several antibodies to CROPs, especially A1E6 and AB8, led to a significant increase of autocleavage and release of TcdA GT fragment in the presence of InsP₆. Other antibodies such as AC1 that also bind to the CROPs but have no effects on CPD autoprocessing, suggesting that the interaction of CROPs with CPD or cleavage sites may be specific. The future study to identify the exact binding epitopes of these monoclonal antibodies may help us to elucidate the precise regions that affect CPD autoprocessing.

It is unclear how exactly the CROPs affect autoprocessing of TcdA. Negative stain EM showed a two-tailed structure of the two toxins [24]. One tail is corresponding to CROPs while the other is N-terminal GTD and CPD. The two tails are spatially adjacent to each other. Compared with TcdB, TcdA has longer CROPs that seems to interact with the glucosyltransferase (1–542) or intermediate (1102–1847) domain of TcdA [12]. It is likely that the long CROPs from TcdA may block the binding sites of InsP₆, subsequently abolishing conformational reorganization and CPD activation induced by InsP₆ [21]. The other potential mechanism is that the CROPs does not affect the InsP₆ binding but the cleavage. CROPs

from TcdA may interact CPD catalytic residue(s) or affect the access of substrate to the cleavage pocket. In the future studies, it is important to elucidate the exact mechanism that the CROPs of TcdA affects the toxin's autoprocessing. Given our recent finding that CPD-mediated autoprocessing is not necessary for cytotoxicity of TcdB to cultured cells [7,8], further study is needed to reveal the physiological importance of the differential regulation of CPD-mediated autoprocessing between these two toxins in relevant animal disease models.

In summary, we reported new evidence to support the potential functional inter-domain regulation in *C. difficile* toxins that the CROPs of TcdA may regulate CPD autoprocessing function. Our finding provides insights on the molecular mode of action of *C. difficile* toxins.

Conflict of interest

The authors declare no conflict of interest.

Acknowledgments

This work was supported by awards R01AI088748, R01DK084509, R56AI99458, and U19 AI109776 funded from the National Institute of Allergy and Infectious Diseases and National Institute of Diabetes and Digestive and Kidney Diseases at the National Institutes of Health (NIH).

Transparency document

Transparency document related to this article can be found online at <http://dx.doi.org/10.1016/j.bbrc.2015.02.095>.

References

- [1] T. Jank, K. Aktories, Structure and mode of action of clostridial glucosylating toxins: the ABCD model, *Trends Microbiol.* 16 (2008) 222–229.
- [2] D. Albesa-Jove, T. Bertrand, E.P. Carpenter, G.V. Swain, J. Lim, J. Zhang, L.F. Haire, N. Vasisht, V. Braun, A. Lange, C. von Eichel-Streiber, D.I. Svergun, N.F. Fairweather, K.A. Brown, Four distinct structural domains in *Clostridium difficile* toxin B visualized using SAXS, *J. Mol. Biol.* 396 (2010) 1260–1270.
- [3] R.N. Pruitt, M.G. Chambers, K.K. Ng, M.D. Ohi, D.B. Lacy, Structural organization of the functional domains of *Clostridium difficile* toxins A and B, *Proc. Natl. Acad. Sci. U. S. A.* 107 (2010) 13467–13472.
- [4] T.C. Savidge, P. Urvil, N. Oezguen, K. Ali, A. Choudhury, V. Acharya, I. Pinchuk, A.G. Torres, R.D. English, J.E. Wiktorowicz, M. Loeffelholz, R. Kumar, L. Shi, W. Nie, W. Braun, B. Herman, A. Hausladen, H. Feng, J.S. Stamler, C. Pothoulakis, Host S-nitrosylation inhibits clostridial small molecule-activated glucosylating toxins, *Nat. Med.* 17 (2011) 1136–1141.
- [5] J. Reineke, S. Tenzer, M. Rupnik, A. Koschinski, O. Hasselmayer, A. Schrattenholz, H. Schild, C. von Eichel-Streiber, Autocatalytic cleavage of *Clostridium difficile* toxin B, *Nature* 446 (2007) 415–419.
- [6] M. Egerer, T. Giesemann, C. Herrmann, K. Aktories, Autocatalytic processing of *Clostridium difficile* toxin B. Binding of inositol hexakisphosphate, *J. Biol. Chem.* 284 (2009) 3389–3395.
- [7] S. Li, L. Shi, Z. Yang, H. Feng, Cytotoxicity of *Clostridium difficile* toxin B does not require cysteine protease-mediated autocleavage and release of the glucosyltransferase domain into the host cell cytosol, *Pathog. Dis.* 67 (2013) 11–18.
- [8] I. Kreimeyer, F. Euler, A. Marcscheffel, H. Tatge, A. Pich, A. Olling, J. Schwarz, I. Just, R. Gerhard, Autoproteolytic cleavage mediates cytotoxicity of *Clostridium difficile* toxin A, *Naunyn-Schmiedeberg's Arch. Pharmacol.* 383 (2011) 253–262.
- [9] R.N. Pruitt, D.B. Lacy, Toward a structural understanding of *Clostridium difficile* toxins A and B, *Front. Cell. Infect. Microbiol.* 2 (2012) 28.
- [10] J.M. Lanis, L.D. Hightower, A. Shen, J.D. Ballard, TcdB from hypervirulent *Clostridium difficile* exhibits increased efficiency of autoprocessing, *Mol. Microbiol.* 84 (2012) 66–76.
- [11] M. Rupnik, S. Pabst, M. Rupnik, C. von Eichel-Streiber, H. Urlaub, H.D. Soling, Characterization of the cleavage site and function of resulting cleavage fragments after limited proteolysis of *Clostridium difficile* toxin B (TcdB) by host cells, *Microbiology* 151 (2005) 199–208.
- [12] A. Olling, C. Huls, S. Goy, M. Muller, S. Krooss, I. Rudolf, H. Tatge, R. Gerhard, The combined repetitive oligopeptides of *Clostridium difficile* toxin A counteract premature cleavage of the glucosyl-transferase domain by stabilizing protein conformation, *Toxins* 6 (2014) 2162–2176.
- [13] R.G. Donald, M. Flint, N. Kalyan, E. Johnson, S.E. Witko, C. Kotash, P. Zhao, S. Megati, I. Yurgelonis, P.K. Lee, Y.V. Matsuka, E. Severina, A. Deatly, M. Sidhu, K.U. Jansen, N.P. Minton, A.S. Anderson, A novel approach to generate a recombinant toxoid vaccine against *Clostridium difficile*, *Microbiology* 159 (2013) 1254–1266.
- [14] M. Egerer, T. Giesemann, T. Jank, K.J. Satchell, K. Aktories, Auto-catalytic cleavage of *Clostridium difficile* toxins A and B depends on cysteine protease activity, *J. Biol. Chem.* 282 (2007) 25314–25321.
- [15] R.N. Pruitt, N.M. Chumbler, S.A. Rutherford, M.A. Farrow, D.B. Friedman, B. Spiller, D.B. Lacy, Structural determinants of *Clostridium difficile* toxin A glucosyltransferase activity, *J. Biol. Chem.* 287 (2012) 8013–8020.
- [16] H. Wang, X. Sun, Y. Zhang, S. Li, K. Chen, L. Shi, W. Nie, R. Kumar, S. Tzipori, J. Wang, T. Savidge, H. Feng, A chimeric toxin vaccine protects against primary and recurrent *Clostridium difficile* infection, *Infect. Immun.* 80 (2012) 2678–2688.
- [17] X. He, X. Sun, J. Wang, X. Wang, Q. Zhang, S. Tzipori, H. Feng, Antibody-enhanced, Fc gamma receptor-mediated endocytosis of *Clostridium difficile* toxin A, *Infect. Immun.* 77 (2009) 2294–2303.
- [18] Z. Yang, D. Schmidt, W. Liu, S. Li, L. Shi, J. Sheng, K. Chen, H. Yu, J.M. Tremblay, X. Chen, K.H. Piepenbrink, E.J. Sundberg, C.P. Kelly, G. Bai, C.B. Shoemaker, H. Feng, A novel multivalent, single-domain antibody targeting TcdA and TcdB prevents fulminant *Clostridium difficile* infection in mice, *J. Infect. Dis.* 210 (2014) 964–972.
- [19] Y. Zhang, L. Shi, S. Li, Z. Yang, C. Standley, Z. Yang, R. ZhuGe, T. Savidge, X. Wang, H. Feng, A segment of 97 amino acids within the translocation domain of *Clostridium difficile* toxin B is essential for toxicity, *PLoS One* 8 (2013) e58634.
- [20] X. He, J. Wang, J. Steele, X. Sun, W. Nie, S. Tzipori, H. Feng, An ultrasensitive rapid immunocytotoxicity assay for detecting *Clostridium difficile* toxins, *J. Microbiol. Methods* 78 (2009) 97–100.
- [21] A.W. Puri, P.J. Lupardus, E. Deu, V.E. Albrow, K.C. Garcia, M. Bogyo, A. Shen, Rational design of inhibitors and activity-based probes targeting *Clostridium difficile* virulence factor TcdB, *Chem. Biol.* 17 (2010) 1201–1211.
- [22] A. Shen, P.J. Lupardus, M.M. Gersch, A.W. Puri, V.E. Albrow, K.C. Garcia, M. Bogyo, Defining an allosteric circuit in the cysteine protease domain of *Clostridium difficile* toxins, *Nat. Struct. Mol. Biol.* 18 (2011) 364–371.
- [23] S. Genisyuer, P. Papatheodorou, G. Guttenberg, R. Schubert, R. Benz, K. Aktories, Structural determinants for membrane insertion, pore formation and translocation of *Clostridium difficile* toxin B, *Mol. Microbiol.* 79 (2011) 1643–1654.
- [24] R.N. Pruitt, M.G. Chambers, K.K. Ng, M.D. Ohi, D.B. Lacy, Structural organization of the functional domains of *Clostridium difficile* toxins A and B, *Proc. Natl. Acad. Sci. U. S. A.* 107 (2010) 13467–13472.